

# Uni & Uni-Ka

## nuova palette cromatica / new color palette

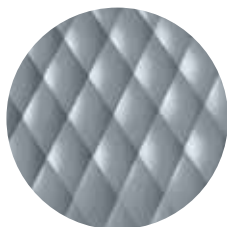
**Et al.** presenta l'evoluzione della gamma colori per le collezioni Uni e Uni-Ka. A partire da settembre 2019, 5 nuovi colori andranno ad aggiungersi all'attuale gamma e alcuni dei colori attualmente a catalogo usciranno all'esaurirsi delle scorte.

**Et al.** presents the evolution of the color range for the Uni and Uni-Ka collections. Starting from September 2019, 5 new colors will be added to the current range and some of the colors currently in production will be discontinued.

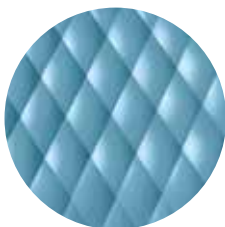
## IN

Questi i colori che entreranno a catalogo:

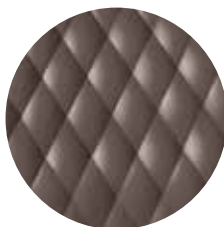
These are the colors that will enter in production:



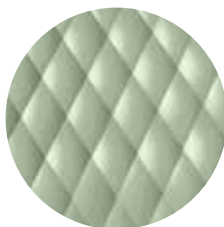
RAL 7000  
Grigio vaio / Squirrel grey



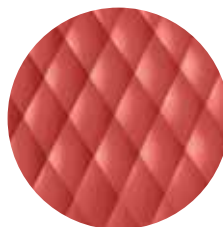
PANTONE 549 C  
Blu polvere /  
Dusty blue



PANTONE 411 C  
Argilla / Clay



NCS S3010-G30Y  
Pistacchio / Pistachio



NCS S 2060-Y90R  
Rosso corallo / Coral red

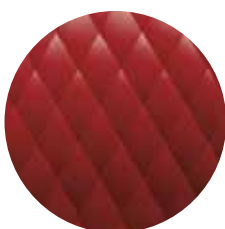
## OUT

Questi i colori che usciranno da catalogo:

These are the colors that will be discontinued:



NCS S7005-Y50R  
Cacao / Cocoa



PANTONE 18-1438  
Marsala / Marsala



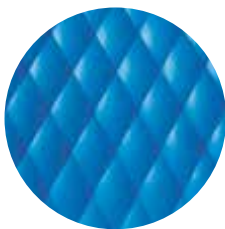
RAL 3000  
Rosso fuoco / Flame red



RAL 2003  
Arancio pastello /  
Pastel orange



RAL 4008  
Violetto segnale /  
Signal violet



NCS S2060-B  
Azzurro / Azure



RAL 6021  
Verde pallido / Pale green



PANTONE 380 C  
Verde boss / Boss green

Per disponibilità di scorte contattare l'ufficio commerciale.

Tutti gli altri colori attualmente a catalogo e non menzionati nel presente documento non subiscono variazioni e rimangono quindi in gamma. /

For stock availability contact sales office). All other colors currently in production and not listed in this document will not change and remain part of the range.