

Maré 539



MARÉ COLLECTION:
Maré 539,



Armchair with anodized or powder coated aluminium frame, 4 legs. Polypropylene seat and back.

STACKABLE

4

WEIGHT

4,5 kg

PACK

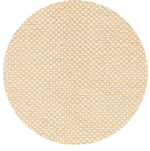
0,47 m³

PIECES PER BOX

4

FINISHES SEATING

TE FABRICS



Sawana Davis
+ 24 colours

PP POLYPROPYLENE



RAL 9010 Pure white
≡



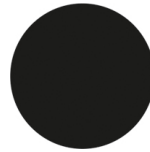
PANTONE 549 C Dusty blue
≡



RAL 3003 Ruby red
≡



PANTONE 497 C Mocha
≡



RAL 9005 Jet black
≡



NCS S3010-G30Y Pistachio
≡



PANTONE 402 C Turtle-dove
≡

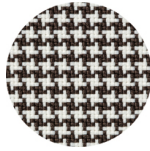
TE FABRICS



Citadel Camira
+ 13 colours



Inca Abitex
+ 15 colours



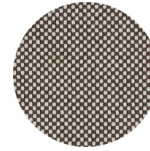
Go-Couture Gabriel
+ 8 colours



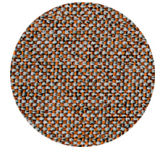
Medley Gabriel
+ 14 colours



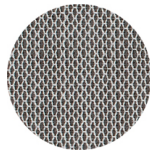
Crazy Flukso
+ 7 colours



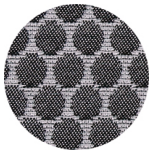
Go-Check Gabriel
+ 13 colours



Rivet Camira
+ 12 colours



Criss Cross Gabriel
+ 19 colours



Bubble Flukso
+ 9 colours



Valencia Spradling
+ 17 colours



Europost 2 Gabriel
+ 16 colours



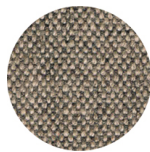
Fame Gabriel
+ 23 colours



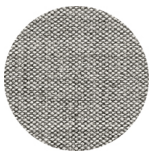
Parotega NF
Skai Hornschuch
+ 8 colours



Revive 2 Kvadrat
+ 7 colours



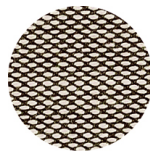
Main line flax Camira
+ 13 colours



Remix 2 Kvadrat
+ 18 colours



Superb Trevira Flukso
+ 17 colours



Steelcut trio 3 Kvadrat
+ 20 colours

FRAMES

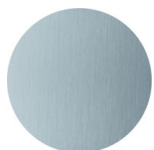
AL AND ANODISED ALUMINIUM



Anodized gloss aluminium



Matt bronze



Matt smoked



Matt Black



AL VR PAINTED ALUMINIUM



RAL 9010
VR Pure white



PANTONE 402 C
VR Turtle-dove



RAL 9005
VR Jet black



RAL 3003
VR Ruby red



RAL 8017
VR Chocolate brown



RAL 9005
VR Matt Jet Black



CERTIFICATIONS

- > ANSI/BIFMA X5.1-2011 - Par.11. Prove di fatica sulla seduta (09/05/14)
- > ANSI/BIFMA X5.1-2011 - Par.12. Stabilità (09/05/14)
- > ANSI/BIFMA X5.1-2011 - Par.13. Sforzo statico verticale sui braccioli (09/05/14)
- > ANSI/BIFMA X5.1-2011 - Par.14. Sforzo statico orizzontale sui braccioli (09/05/14)
- > ANSI/BIFMA X5.1-2011 - Par.16. Prove di fatica sullo schienale (09/05/14)
- > ANSI/BIFMA X5.1-2011 - Par.18. Sforzo statico sulla gambe (09/05/14)
- > ANSI/BIFMA X5.1-2011 - Par.21. Prova di fatica sui braccioli (09/05/14)
- > ANSI/BIFMA X5.1-2011 - Par.6. Sforzo statico sullo schienale (09/05/14)
- > ANSI/BIFMA X5.1-2011 - Par.8. Caduta di un peso (09/05/14)
- > UNI/EN 16139:2013 - Par.4.1. Generale. 4.2. Cesoiamento (25/03/14)
- > UNI/EN 16139:2013 - Par.4.3. Stabilità (25/03/14) > UNI/EN 16139:2013 - Par.7. Informazioni per l'uso (25/03/14)
- > UNI/EN 16139:2013 - Prova 1. Carico statico sedile e schienale: 2-Uso estremo (25/03/14)
- > UNI/EN 16139:2013 - Prova 10. Prova di fatica dei braccioli: 2-Uso estremo (25/03/14)
- > UNI/EN 16139:2013 - Prova 12. Carico statico gambe anteriori: 2-Uso estremo (25/03/14)
- > UNI/EN 16139:2013 - Prova 13. Carico statico gambe laterali: 2-Uso estremo (25/03/14)
- > UNI/EN 16139:2013 - Prova 14. Prova di urto sul sedile: 2-Uso estremo (25/03/14)
- > UNI/EN 16139:2013 - Prova 15. Prova di urto sullo schienale: 2-Uso estremo (25/03/14)
- > UNI/EN 16139:2013 - Prova 16. Prova di urto sul bracciolo: 2-Uso estremo (25/03/14)
- > UNI/EN 16139:2013 - Prova 2. Carico statico sul fronte anteriore: 2-Uso estremo (25/03/14)
- > UNI/EN 16139:2013 - Prova 3. Carico verticale sullo schienale: 2-Uso estremo (25/03/14)
- > UNI/EN 16139:2013- Prova 5. Carico statico laterale sui braccioli: 2-Uso estremo (25/03/14)
- > UNI/EN 16139:2013 - Prova 6. Carico statico verticale verso il basso sui braccioli: 2-Uso estremo (25/03/14)
- > UNI/EN 16139:2013 - Prova 7. Carico statico verticale verso l'alto sui braccioli: 2-Uso estremo (25/03/14)
- > UNI/EN 16139:2013 - Prova 8. Prova di fatica sedile e schienale: 2-Uso estremo (25/03/14)
- > UNI/EN 16139:2013 - Prova 9. Prova di fatica sul bordo anteriore: 2-Uso estremo (25/03/14)

USES

coffee & restaurants, hotels, educational, entertainment, travel, office and waiting areas, retail, health care,