

## Flint 535-A

### FLINT COLLECTION:

Flint 535-A, Flint 535-AM, Flint 535-B,  
Flint 535-BM, Flint549, Flint 549M,



Armchair with 4 legs steel frame and backrest,  
polyamide, Iroko wood or leather seat.

#### STACKABLE

4

#### WEIGHT

6,5 Kg

#### PACK

0,39 m<sup>3</sup>

#### PIECES PER BOX

4

## FINISHES SEATING

### PA POLYAMIDE



PANTONE 402 C Turtle-dove  
≡



PANTONE 497 C Mocha  
≡



RAL 3003 Ruby red  
≡



RAL 7016 Anthracite grey  
≡



RAL 9010 Pure white  
≡



RAL 6005 Moss green  
≡

### CU LEATHER



Black



Brick red



dark brown



Bordeaux

### LE WOOD



Iroko  


## FRAMES

### AC STEEL



RAL 9005  
VR Jet black



RAL 9005  
VR Matt Jet Black



RAL 9016  
VR Traffic white



RAL 9010  
VR Pure white



PANTONE 402 C  
VR Turtle-dove



RAL 9006  
VR White aluminium



RAL 7016  
VR Anthracite grey



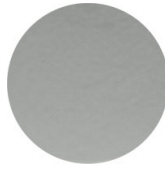
VR Pewter



RAL 3003  
VR Ruby red



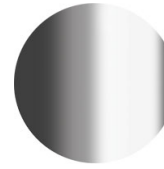
RAL 8017  
VR Chocolate brown



RAL 7037  
VR Matt Dusty grey



VR Rough metallic  
bronze



CR Chrome



CR X Brass chrome



CR X Burnished chrome

## CERTIFICATIONS

- > UNI/EN 16139:2013 - Par.4.1. Generale. Par. 4.2. Cesoiamento (14/04/15)
- > UNI/EN 16139:2013 - Par.4.3. Stabilità (14/04/15) > UNI/EN 16139:2013 - Prova 1. Carico statico sedile e schienale: 2-Uso estremo (14/04/15)
- > UNI/EN 16139:2013 - Prova 2. Carico statico sul fronte anteriore: 2-Uso estremo (14/04/15) > UNI/EN 16139:2013 - Prova 3. Carico verticale sullo schienale: 2-Uso estremo (14/04/15)
- > UNI/EN 16139:2013 - Prova 5. Carico statico laterale sui braccioli: 2-Uso estremo (14/04/15)
- > UNI/EN 16139:2013 - Prova 6. Carico statico verticale verso il basso sui braccioli: 2-Uso estremo (14/04/15)
- > UNI/EN 16139:2013 - Prova 8. Prova di fatica sedile e schienale: 2-Uso estremo (15/07/15)

## USES

coffee & restaurants, retail,

Marc Sadler

## Flint 535-AM



FLINT COLLECTION:

Flint 535-A, Flint 535-AM, Flint 535-B, Flint 535-BM, Flint549,  
Flint 549M,



Armchair with 4 legs steel frame and backrest, upholstered seat.

**WEIGHT**

6,7 kg

**PACK**

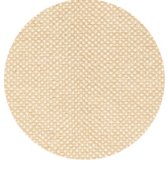
0,33 m<sup>3</sup>

**PIECES PER BOX**

2

## FINISHES SEATING

### TE FABRICS



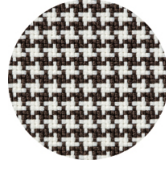
Sawana Davis  
+ 24 colours



Citadel Camira  
+ 13 colours



Inca Abitex  
+ 15 colours



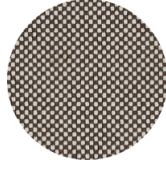
Go-Couture Gabriel  
+ 8 colours



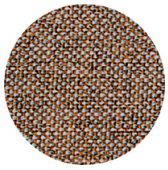
Medley Gabriel  
+ 14 colours



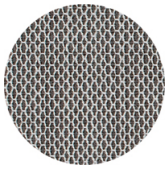
Crazy Flukso  
+ 7 colours



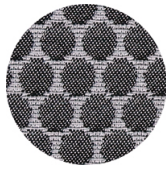
Go-Check Gabriel  
+ 13 colours



Rivet Camira  
+ 12 colours



Criss Cross Gabriel  
+ 19 colours



Bubble Flukso  
+ 9 colours



Valencia Spradling  
+ 17 colours



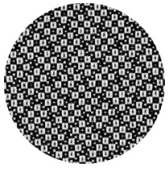
Europost 2 Gabriel  
+ 16 colours



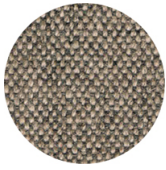
Fame Gabriel  
+ 23 colours



Parotega NF  
Skai Hornschuch  
+ 8 colours



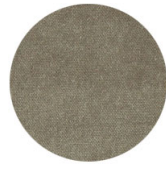
Revive 2 Kvadrat  
+ 7 colours



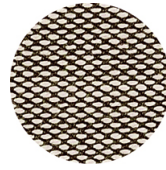
Main line flax Camira  
+ 13 colours



Remix 2 Kvadrat  
+ 18 colours



Superb Trevira Flukso +  
17 colours



Steelcut trio 3 Kvadrat  
+ 20 colours

## FRAMES

### AC STEEL



RAL 9005  
VR Jet black  
☀



RAL 9005  
VR Matt Jet Black  
☀



RAL 9016  
VR Traffic white  
☀



RAL 9010  
VR Pure white  
☀



PANTONE 402 C  
VR Turtle-dove  
☀



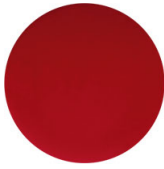
RAL 9006  
VR White aluminium  
☀



RAL 7016  
VR Anthracite grey  
☀



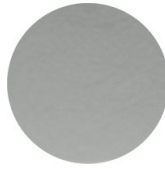
VR Pewter  
☀



RAL 3003  
VR Ruby red  
☀



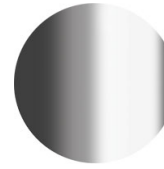
RAL 8017  
VR Chocolate brown  
☀



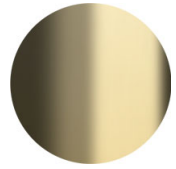
RAL 7037  
VR Matt Dusty grey  
☀



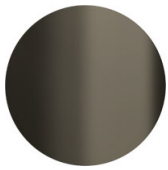
VR Rough metallic  
bronze  
☀



CR Chrome



CR X Brass chrome



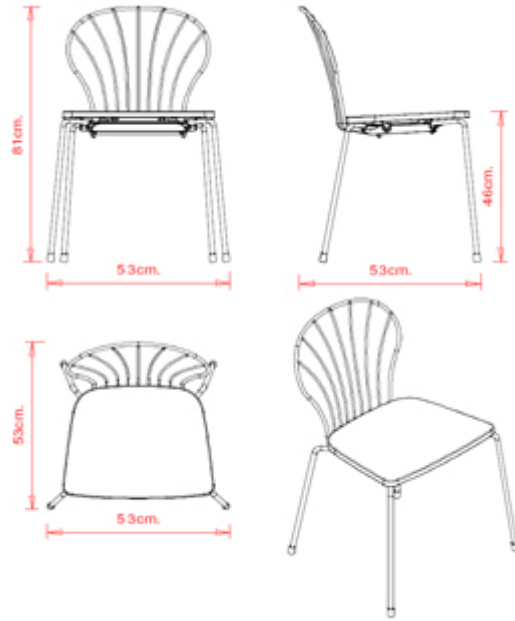
CR X Burnished chrome

## USES

coffee & restaurants, retail,

## Flint 535-B

FLINT COLLECTION:  
 Flint 535-A, Flint 535-AM, Flint 535-B,  
 Flint 535-BM, Flint549, Flint 549M,



Chair with 4 legs steel frame and backrest,  
 polyamide or Iroko wood seat.

**STACKABLE**

4

**WEIGHT**

5,3 Kg

**PACK**

0,39 m<sub>3</sub>

**PIECES PER BOX**

4

## FINISHES SEATING

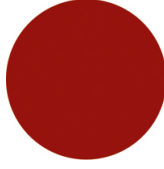
### PA POLYAMIDE



PANTONE 402 C Turtle-dove  
≡



PANTONE 497 C Mocha  
≡



RAL 3003 Ruby red  
≡



RAL 7016 Anthracite grey  
≡



RAL 9010 Pure white  
≡



RAL 6005 Moss green  
≡

### LE WOOD



Iroko  




## FRAMES

### AC STEEL



RAL 9005  
VR Jet black



RAL 9005  
VR Matt Jet Black



RAL 9016  
VR Traffic white



RAL 9010  
VR Pure white



PANTONE 402 C  
VR Turtle-dove



RAL 9006  
VR White aluminium



RAL 7016  
VR Anthracite grey



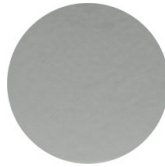
VR Pewter



RAL 3003  
VR Ruby red



RAL 8017  
VR Chocolate brown



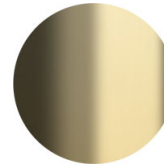
RAL 7037  
VR Matt Dusty grey



VR Rough metallic  
bronze



CR Chrome



CR X Brass chrome



CR X Burnished chrome

## CERTIFICATIONS

- > UNI/EN 16139:2013 - Par.4.1. Generale. Par.4.2. Cesoiamento (07/07/15)
- > UNI/EN 16139:2013 - Par.4.3. Stabilità (07/07/15) > UNI/EN 16139:2013 - Prova 1. Carico statico sedile e schienale: 2-Uso estremo (07/07/15)
- > UNI/EN 16139:2013 - Prova 2. Carico statico sul fronte anteriore: 2-Uso estremo (07/07/15)
- > UNI/EN 16139:2013 - Prova 3. Carico verticale sullo schienale: 2-Uso estremo (07/07/15)
- > UNI/EN 16139:2013 - Prova 8. Prova di fatica sedile e schienale: 2-Uso estremo (07/07/15)
- > UNI/EN 16139:2013 - Prova 9. Prova di fatica sul bordo anteriore: 2-Uso estremo (07/07/15)

## USES

coffee & restaurants, retail,

Marc Sadler

## Flint 535-BM



FLINT COLLECTION:

Flint 535-A, Flint 535-AM, Flint 535-B, Flint 535-BM, Flint549,  
Flint 549M,



Chair with 4 legs steel frame and backrest, upholstered seat.

**WEIGHT**

5,5 kg

**PACK**

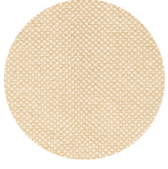
0,33 m<sup>3</sup>

**PIECES PER BOX**

2

## FINISHES SEATING

### TE FABRICS



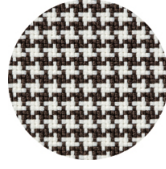
Sawana Davis  
+ 24 colours



Citadel Camira  
+ 13 colours



Inca Abitex  
+ 15 colours



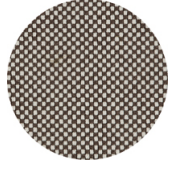
Go-Couture Gabriel  
+ 8 colours



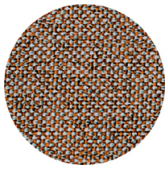
Medley Gabriel  
+ 14 colours



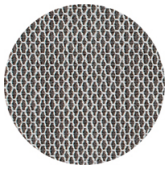
Crazy Flukso  
+ 7 colours



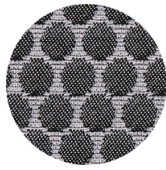
Go-Check Gabriel  
+ 13 colours



Rivet Camira  
+ 12 colours



Criss Cross Gabriel  
+ 19 colours



Bubble Flukso  
+ 9 colours



Valencia Spradling  
+ 17 colours



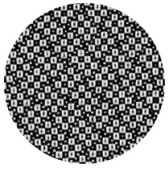
Europost 2 Gabriel  
+ 16 colours



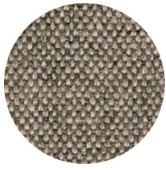
Fame Gabriel  
+ 23 colours



Parotega NF  
Skai Hornschuch  
+ 8 colours



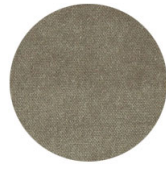
Revive 2 Kvadrat  
+ 7 colours



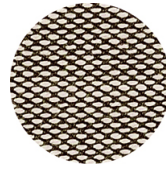
Main line flax Camira  
+ 13 colours



Remix 2 Kvadrat  
+ 18 colours



Superb Trevira Flukso +  
17 colours



Steelcut trio 3 Kvadrat  
+ 20 colours

## FRAMES

### AC STEEL



RAL 9005  
VR Jet black  
☀



RAL 9005  
VR Matt Jet Black  
☀



RAL 9016  
VR Traffic white  
☀



RAL 9010  
VR Pure white  
☀



PANTONE 402 C  
VR Turtle-dove  
☀



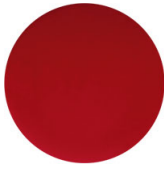
RAL 9006  
VR White aluminium  
☀



RAL 7016  
VR Anthracite grey  
☀



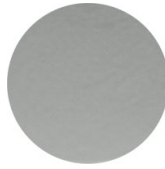
VR Pewter  
☀



RAL 3003  
VR Ruby red  
☀



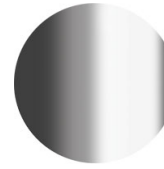
RAL 8017  
VR Chocolate brown  
☀



RAL 7037  
VR Matt Dusty grey  
☀



VR Rough metallic  
bronze  
☀



CR Chrome



CR X Brass chrome



CR X Burnished chrome

## USES

coffee & restaurants, retail,

## Flint549



### FLINT COLLECTION:

Flint 535-A, Flint 535-AM, Flint 535-B,  
Flint 535-BM, Flint549, Flint 549M,



Stool. 4-leg stool with steel frame, polyamide,  
leather or iroko seat.

#### STACKABLE

4

#### WEIGHT

5 kg

#### PACK

0,33 m<sup>3</sup>

#### PIECES PER BOX

2

## FINISHES SEATING

### PA POLYAMIDE



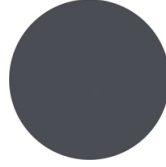
PANTONE 402 C Turtle-dove  
≡



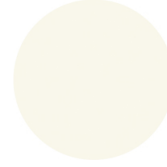
PANTONE 497 C Mocha  
≡



RAL 3003 Ruby red  
≡



RAL 7016 Anthracite grey  
≡



RAL 9010 Pure white  
≡



RAL 6005 Moss green  
≡

### CU LEATHER



Black



Brick red



dark brown



Bordeaux

### LE WOOD



Iroko  


## FRAMES

### AC STEEL



RAL 9005  
VR Jet black  
☀



RAL 9005  
VR Matt Jet Black  
☀



RAL 9016  
VR Traffic white  
☀



RAL 9010  
VR Pure white  
☀



PANTONE 402 C  
VR Turtle-dove  
☀



RAL 9006  
VR White aluminium  
☀



RAL 7016  
VR Anthracite grey  
☀



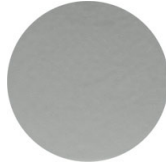
VR Pewter  
☀



RAL 3003  
VR Ruby red  
☀



RAL 8017  
VR Chocolate brown  
☀



RAL 7037  
VR Matt Dusty grey  
☀



VR Rough metallic  
bronze  
☀



CR Chrome



CR X Brass chrome



CR X Burnished chrome

## USES

coffee & restaurants, retail,

## Flint 549M



### FLINT COLLECTION:

Flint 535-A, Flint 535-AM, Flint 535-B,  
Flint 535-BM, Flint549, Flint 549M,



Stool. 4-leg stool with steel frame and upholstered seat.

#### STACKABLE

4

#### WEIGHT

5 Kg

#### PACK

0,33 m<sup>3</sup>

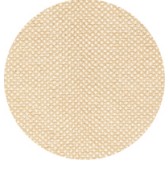
#### PIECES PER BOX

2



## FINISHES SEATING

### TE FABRICS



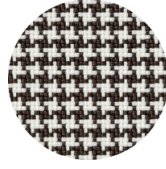
Sawana Davis  
+ 24 colours



Citadel Camira  
+ 13 colours



Inca Abitex  
+ 15 colours



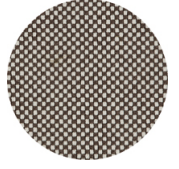
Go-Couture Gabriel  
+ 8 colours



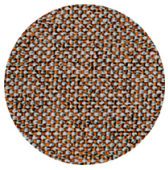
Medley Gabriel  
+ 14 colours



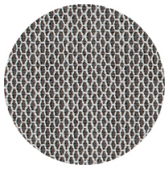
Crazy Flukso  
+ 7 colours



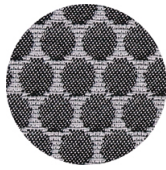
Go-Check Gabriel  
+ 13 colours



Rivet Camira  
+ 12 colours



Criss Cross Gabriel  
+ 19 colours



Bubble Flukso  
+ 9 colours



Valencia Spradling  
+ 17 colours



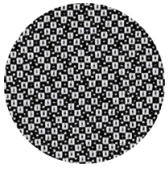
Europost 2 Gabriel  
+ 16 colours



Fame Gabriel  
+ 23 colours



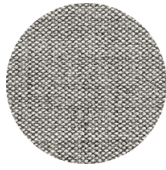
Parotega NF  
Skai Hornschuch  
+ 8 colours



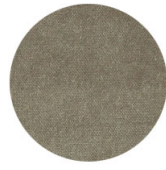
Revive 2 Kvadrat  
+ 7 colours



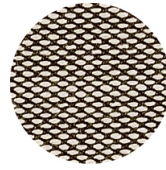
Main line flax Camira  
+ 13 colours



Remix 2 Kvadrat  
+ 18 colours



Superb Trevira Flukso +  
17 colours



Steelcut trio 3 Kvadrat  
+ 20 colours

## FRAMES

### AC STEEL



RAL 9005  
VR Jet black  
☀



RAL 9005  
VR Matt Jet Black  
☀



RAL 9016  
VR Traffic white  
☀



RAL 9010  
VR Pure white  
☀



PANTONE 402 C  
VR Turtle-dove  
☀



RAL 9006  
VR White aluminium  
☀



RAL 7016  
VR Anthracite grey  
☀



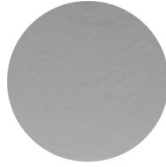
VR Pewter  
☀



RAL 3003  
VR Ruby red  
☀



RAL 8017  
VR Chocolate brown  
☀



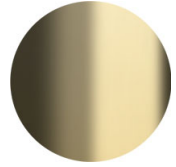
RAL 7037  
VR Matt Dusty grey  
☀



VR Rough metallic  
bronze  
☀



CR Chrome



CR X Brass chrome



CR X Burnished chrome

## USES

coffee & restaurants, retail,